

**PLAT No 15567 OWNER'S DEDICATION**

We, the undersigned, owners of the property described hereon, hereby adopt this plan of subdivision, dedicate the streets to public use, establish the minimum building restriction lines and grant to Montgomery County, MD, slope easements 25 feet wide across all lots adjacent, contiguous and parallel to all street right-of-way lines as required by Montgomery County Ordinance No. 4-115. Said slope easements shall be extinguished at such time as the public improvements on the abutting rights-of-way have been completed and accepted for maintenance by Montgomery County, MD.

Further, we grant to the Washington Suburban Sanitary Commission, their successors, agents and assigns, easements, designated hereon as "W.S.S.C. Esm't.", for the construction, reconstruction, maintenance and operation of water mains, sanitary sewers and/or appurtenances.

Further, we grant to Montgomery County, MD, easements, designated hereon as "S.D. Esm't.", for the construction, reconstruction, maintenance and operation of storm drains and/or appurtenances.

Further, we grant to Potomac Edison Company and to Chesapeake and Potomac Telephone Co. of MD, and to their respective successors and assigns, an easement in, on and over the land hereon described as Ten Foot Wide Public Utility Easement, designated hereon as

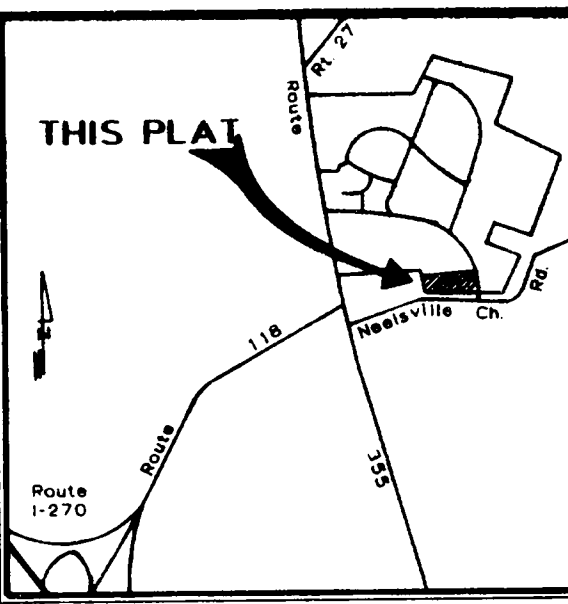
"P.U.E." with the terms and provisions of such a grant being those set forth in a certain document entitled "Declaration of Terms and Provisions for Public Utility Easements" and recorded among the Land Records of Montgomery County, MD, in Liber 3834 at Folio 457, said terms and provisions being incorporated herein by this reference.

Further, we grant to Montgomery County, MD, a ten foot wide "Public Improvement Easement" designated hereon as "P.I.E." Said easement being granted with the terms and provisions set forth in a certain document entitled "Declaration of Easement" recorded among the Land Records of Montgomery County, MD, in Liber 4899 at Folio 3.

There are no recorded suits of action, liens, leases mortgages or trusts affecting the property included in this plan of subdivision, except certain deeds of trusts, and all parties in interest thereto have below indicated their assent.

We hereby assent to this plan

*Ann C. House*  
*Francis W. Berk*  
*Debra Berk Greenwald*  
*Alfred M. Berk*



VICINITY MAP Scale: 1"=2000'

NO.	RADIUS	DELTA	ARC	CHORD	CHORD BEING	TANGENT
1	280.74	22°35'19"	102.80	102.13	N00°58'40"E	52.08
2	25.00	85°54'37"	24.25	23.32	N17°26'28"E	13.18
3	44.00	281°09'55"	23.80	46.74	N84°23'00"W	30.15
4	25.00	85°54'37"	24.25	23.32	S38°08'28"E	13.18
5	232.74	18°31'58"	87.18	86.82	S02°05'01"E	23.81
6	280.74	22°35'19"	102.80	102.13	N00°58'40"E	52.08
7	25.00	85°54'37"	24.25	23.32	N33°24'28"E	13.18
8	25.00	85°54'37"	24.25	23.32	S33°24'28"E	13.18
9	44.00	281°09'55"	23.80	46.74	N84°23'00"W	30.15
10	25.00	85°54'37"	24.25	23.32	S33°24'28"E	13.18
11	280.74	22°35'19"	102.80	102.13	N00°58'40"E	52.08
12	485.00	25°41'38"	182.30	180.83	N88°24'57"W	87.54

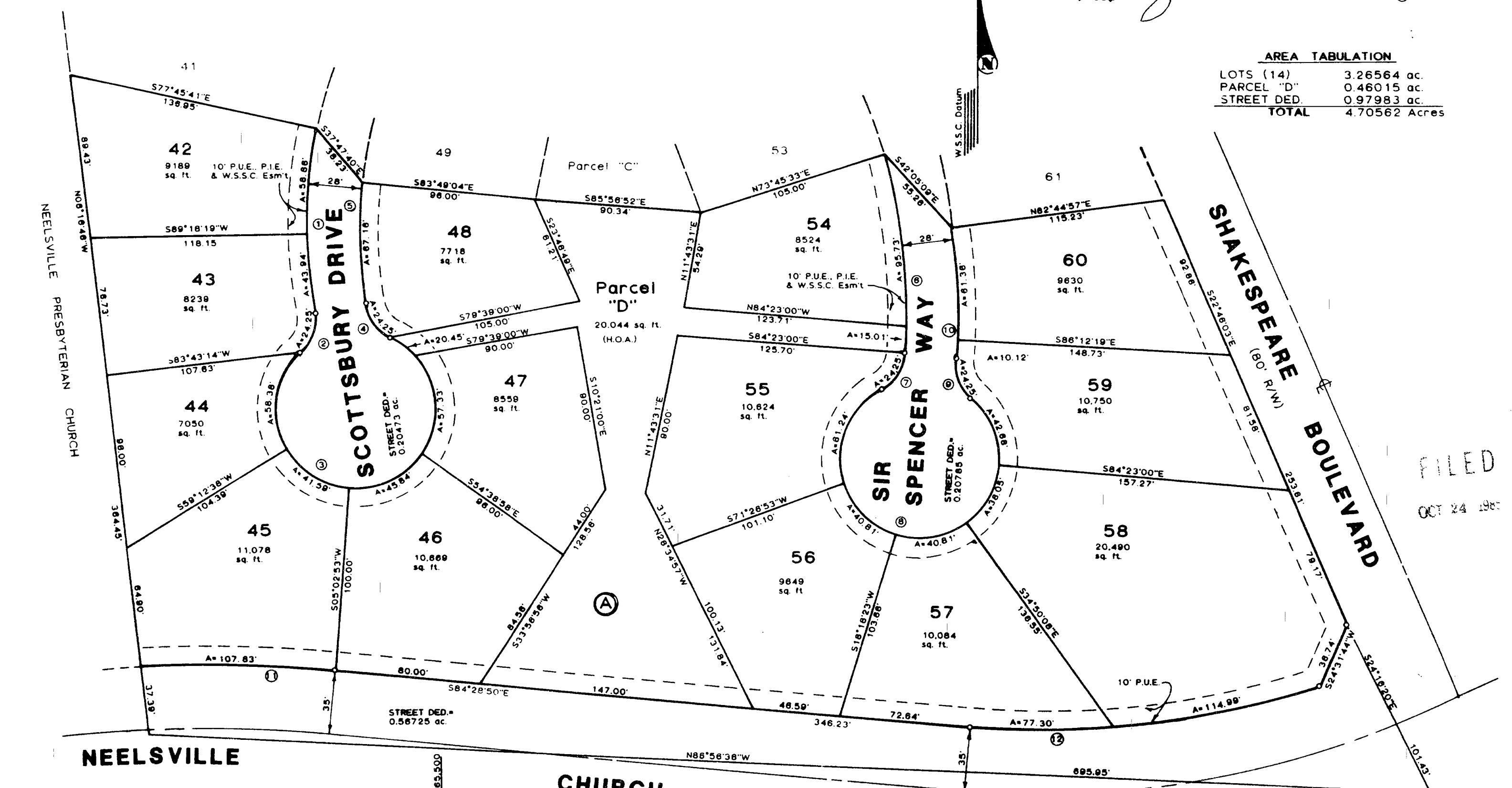
**SURVEYOR'S CERTIFICATE**

I hereby certify that the plan shown hereon is correct, that it is a subdivision of part of the land described in a conveyance from Maurice H. Berk, et al. to Maurice H. Berk, trustee of the Milestone-Berk Trust for Debra Berk Greenwald and Anton Jeffrey Berk as described in a Deed of Partition dated Jan. 14, 1980 and recorded among the Land Records of Montgomery County, MD, in Liber 5468 at Folio 285. Iron pipes marked thus — and monuments marked thus — will be set where indicated.

12/20/83  
 James M. Fowler, Jr.  
 Registered Land Surveyor No. 4214

**AREA TABULATION**

LOTS (14)	3.26564 ac.
PARCEL "D"	0.46015 ac.
STREET DED.	0.97983 ac.
<b>TOTAL</b>	<b>4.70562 Acres</b>



FOR PUBLIC SEWER AND WATER SYSTEMS ONLY **283429/1829 88310.08033760 RMH**

MARYLAND NATIONAL CAPITAL PARK AND PLANNING COMMISSION  
 MONTGOMERY COUNTY PLANNING BOARD

APPROVED: **DECEMBER 15, 1983**  
*James L. Christelle* CHAIRMAN  
*[Signature]* SECRETARY/TREASURER

M.N.C.P.&P.C. RECORD FILE NO. **560-05**

MONTGOMERY COUNTY, MARYLAND  
 DEPARTMENT OF TRANSPORTATION

APPROVED: **FEBRUARY 7, 1984**  
*[Signature]* FOR DIRECTOR

**WEXFORD**  
 Ninth Election District  
 Montgomery County, Maryland OCT 1983

LOIEDERMAN ASSOCIATES, Inc.  
 CIVIL ENGINEERS - LAND SURVEYORS  
 200-A Monroe Street  
 Rockville, Maryland 20850 (301) 762-0882

MONTGOMERY COUNTY CIRCUIT COURT (Subdivision Plats, MO) Plat 15567, MSA\_51249\_21771, Date available 1985/10/24, Printed 04/09/2021.