

PLAT NO. 1987-10 OWNER'S DEDICATION

We, the undersigned, owners of the property described hereon, hereby adopt this plan of subdivision, dedicate the streets to public use, establish the minimum building restriction lines and grant to Montgomery County, MD, slope easements 25 feet wide across all lots adjacent, contiguous and parallel to all street right-of-way lines as required by Montgomery County Ordinance No. 4-115. Said slope easements shall be extinguished at such time as the public improvements on the abutting rights-of-way have been completed and accepted for maintenance by Montgomery County, MD.

Further, we grant to the Washington Suburban Sanitary Commission, their successors, agents and assigns, easements, designated hereon as "W.S.S.C. Esm't", for the construction, reconstruction, maintenance and operation of water mains, sanitary sewers and/or appurtenances.

Further, we grant to Montgomery County, MD, easements, designated hereon as "S.D. Esm't", for the construction, reconstruction, maintenance and operation of storm drains and/or appurtenances.

Further, we grant to Potomac Edison Company and to Chesapeake and Potomac Telephone Co. of MD, and to their respective successors and assigns, an easement in, on and over the land hereon described as Ten Foot Wide Public Utility Easement, designated hereon as

"P.U.E." with the terms and provisions of such a grant being those set forth in a certain document entitled "Declaration of Terms and Provisions for Public Utility Easements" and recorded among the Land Records of Montgomery County, MD, in Liber 3834 at Folio 457.

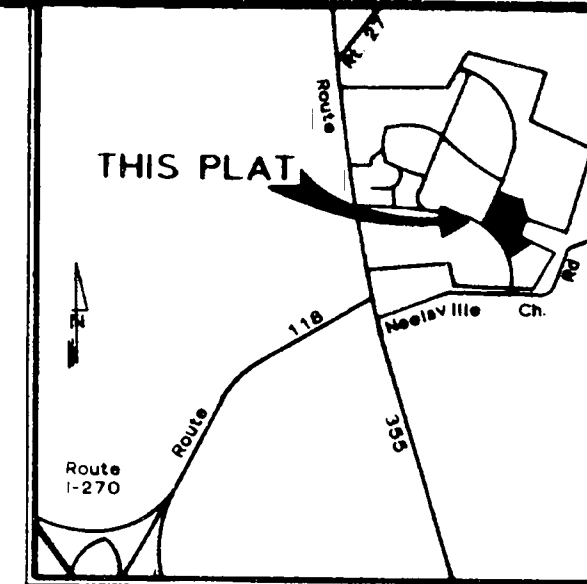
Further, we grant to Montgomery County, MD, a ten foot wide "Public Improvement Easement" designated hereon as "P.I.E.". Said easement being granted with the terms and provisions set forth in a certain document entitled "Declaration of Easement" recorded among the Land Records of Montgomery County, MD, in Liber 6899 at Folio 3. Said terms being incorporated herein by this reference.

There are no recorded suits of action, liens, leases mortgages or trusts affecting the property included in this plan of subdivision, except certain deeds of trusts, and all parties in interest thereto have below indicated their assent.

We hereby assent to this plan

Ann C. House
Franklin B. Berk
Debra Berk Greenwald
Alfred J. Berk

Maurice H. Berk, Trustee



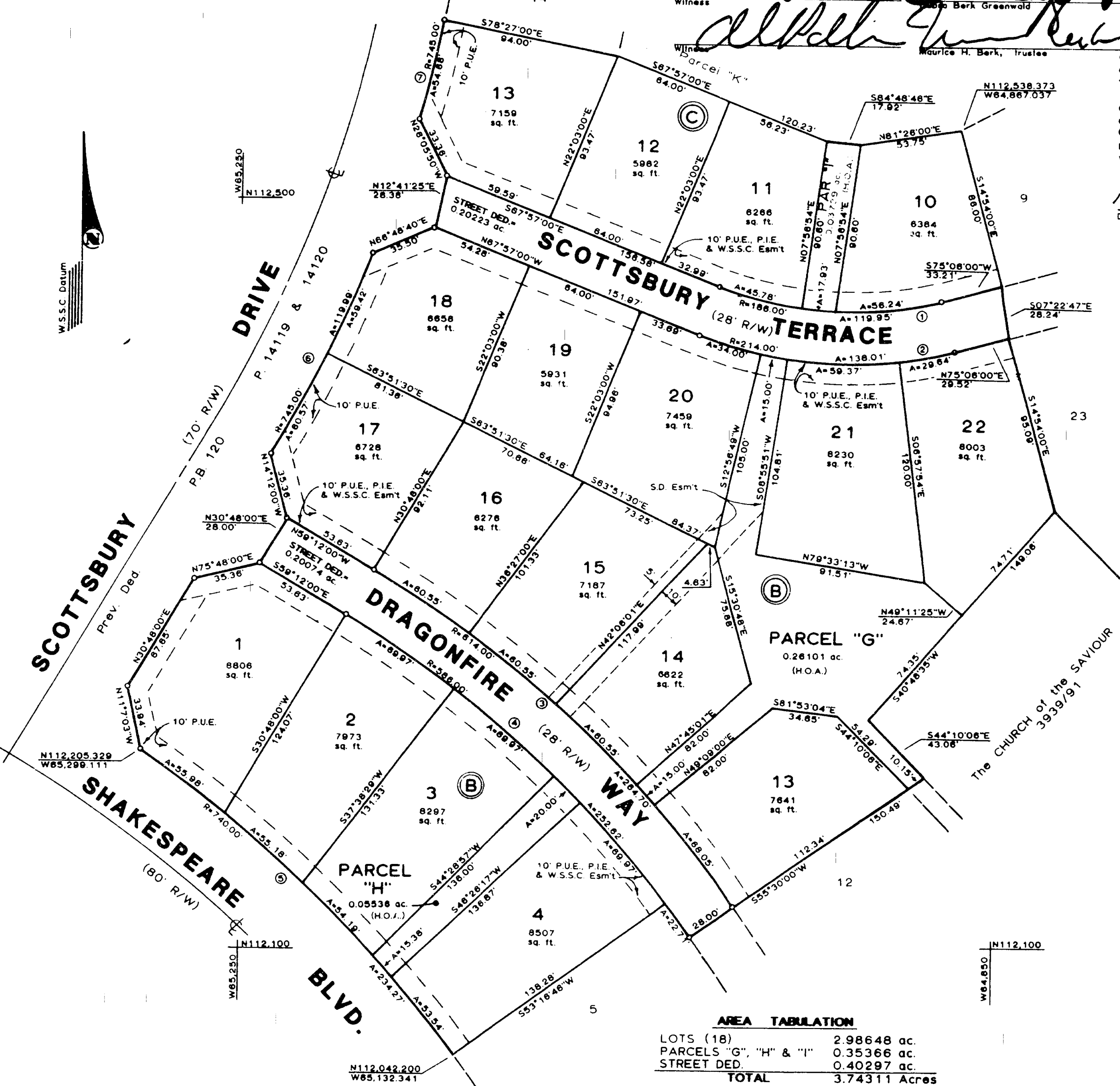
SURVEYOR'S CERTIFICATE

I hereby certify that the plan shown hereon is correct, that it is a subdivision of part of the land described in a conveyance from Maurice H. Berk, et al, to Maurice H. Berk, trustee of the Milestone-Berk Trust for Debra Berk Greenwald and Anton Jeffrey Berk as described in a Deed of Partition dated Jan 14, 1980 and recorded among the Land Records of Montgomery County, MD in Liber 5468 at Folio 285. Iron pipes marked thus —○— and monuments marked thus —■— will be set where indicated.

12/20/83
 James M. Fowler, Jr. Registered Land Surveyor MD No. 4774

NOTE - This plat conforms with the requirements of Chapter 20A of the Montgomery County Code to provide Moderately Priced Dwelling Units.

NOTE - Site to be developed in accordance with the RMR Zoning and approved site plans.



NO.	RADIUS	DELTA	ARC	CHORD	CHORD BRNG.	TANGENT
1	186.00	36°57'00"	119.85	117.88	S88°25'30"E	62.14
2	214.00	38°57'00"	138.51	135.63	S88°25'30"W	71.50
3	814.00	24°42'00"	284.70	282.85	S48°51'00"E	134.44
4	585.00	24°42'00"	252.62	250.87	N48°51'00"W	128.30
5	740.00	18°08'18"	234.27	233.29	N45°37'57"W	118.12
6	745.00	08°13'40"	119.88	119.88	N88°11'07"E	80.12
7	745.00	04°12'20"	54.88	54.87	N13°36'10"E	27.35

AREA TABULATION

LOTS (18)	2.98648 ac.
PARCELS "G", "H" & "I"	0.35366 ac.
STREET DED.	0.40297 ac.
TOTAL	3.74311 Acres

LOTS 1-4, 13-22, PARCELS "G" & "H"
 BLOCK "B"
 LOTS 10-13, PARCEL "I"
 BLOCK "C"

WEXFORD FILED
 OCT 24 1985

FOR PUBLIC SEWER AND WATER SYSTEMS ONLY 20343417029088311008033700 RMH

MARYLAND NATIONAL CAPITAL PARK AND PLANNING COMMISSION
 MONTGOMERY COUNTY PLANNING BOARD

APPROVED: *December 15, 1983*
 Chairman: *Thomas L. Christelle*
 Secretary/Treasurer: *John R. ...*

M.N.C.P. & P.C. RECORD FILE NO. 560-10

MONTGOMERY COUNTY, MARYLAND
 DEPARTMENT OF TRANSPORTATION

APPROVED: *January 30, 1984*
 BY: *Robert J. Neumann*
 FOR DIRECTOR

RECORDED _____
 PLAT BOOK: _____
 PLAT NO: _____

Ninth Election District
 Montgomery County, Maryland

SCALE - 1"=50' OCT, 1983

LOIEDERMAN ASSOCIATES, Inc.
 CIVIL ENGINEERS - LAND SURVEYORS
 200 - A Monroe Street
 Rockville, Maryland
 20850 (301) 762-0882

MONTGOMERY COUNTY CIRCUIT COURT (Subdivision Plats, MO) Plat 15572, MSA_S1249_21776, Date available 1985/10/24, Printed 03/05/2016.